

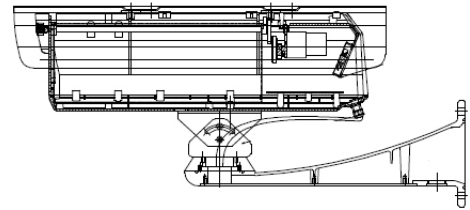
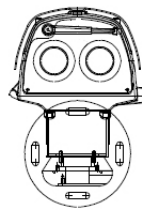
Thermal dual network camera



TCID11 / TCID12 / TCID13

KEY FEATURES

- High resolution thermal camera
- f EU imported thermal detector
- f Direct sun protection
- f 384x248 / 640x480 / 1024x768 resolution
- f 30fps image (no military video limitations)
- f High definition image
- f High reliability system
- f H.264 and MJPEG compression
- f Advanced radiometric optional
- f Motion detection
- f Giga Ethernet connection
- f DC/POE power
- f VMS included
- f Onvif 2.5 and profile S compliant
- f A wide range of lenses to select
- f Aluminum casting heavy duty housing including casting bracket
- f Salt proof housing
- f Advanced video analytics*
 - » Internal 5 port multipurpose switch



Specifications:

	Model	TCID11	TCID12	TCID13
Camera	Camera type	Fix single thermal camera		
	Sensor type	LWIR, uncooled a-Si micro-bolometer		
	Resolution	384x288	640x480	1024x768
	Pixel pitch	17µm.	17µm.	17µm.
	Sensitivity NETD	<40mK@f/1,0 50Hz. 300K		
	Lens f. number *	Base in the lens selection, available lenses from 4,8-60mm.		
	Spectral range	8-14µm.		
	Application	Security, radiometric		
	Color palette	10 colors		
	Image setting	AGC, Level/span, Mirror, Flip, Invert, Image filter, screen menu		
	Zoom	2X, 4X, Digital zoom, also available optical zoom (zoom lenses)		
Focus	Athermal (focus free), manual, motorized, auto-focus, base in lens type			
Thermal Video	Compression	H.264, MJPEG		
	Frames/Second	Max 30fps.		
	Analogue video	BNC output		
	Bitrate setting	VBR, CBR 192kbps-45Mbps		
	Standard	Onvif 2.5, Profile S		
	Video analytics	Virtual lines, polygons, object classification, direction		
Day/Night Video	Resolution	2 megapixel Full HD / 1920x1080		
	Sensor type	1/2,8"Sony Starvis Ultra lox lux (Sony FCB EV7520)		
	Min. illumination	Colour: 0.01 lx (F1.6, AGC on, 1/30s)		
	Zoom	30X optical / 12X digital (4.3-129mm.)		
	Frames/Second	30fps.		
	Focus	Autofocus, manual focus		
	Image stabilizer	Yes		
	Defog	Yes		
	Wide dynamic range	120dB.		
	Slow shutter AE	Yes		
	Motion detection	Yes		
	High light compens.	Yes		
	Noise reduction	Yes / 2D+3D		
	Gain	50dB.		
	S/N ratio	>50dB.		
Network	Network	5x RJ45 10/100 - Giga Ethernet (radiometric models)		
	Network protocol	HTTP, HTTPS, RTP/RTSP, TCP/IP, FTP, Telnet, SNMP, DHCP, NTP, SMTP, IPv4,DDNS		
	Web browser	IE6 and above, web interface		
	Remote admin	Web based setup		
General	VMS	Included 16 Ch. (With temperature alarms in radiometric models)***		
	Housing	Aluminum casting, including bracket		
	Waterproof	IP66		
	Salt-proof	Yes		
	Heater/defroster	Yes		
	Wiper	Yes		
	Serial port	RS485		
	Power	DC12v./ and POE		
	Power demand	DC 9W., 3 Amp.		
	Working Temp.	-15°/60°C. / 10-90% RH		
	Weight	5100gr. (Without lens, including housing)		
Dimension	530x180x230mm.			

Optional Lenses:

Optional Thermal Lenses	Focal length	f. Number	Focus type
	4.8mm **	f1.0	Manual
	8.0mm **	f1.0	Fixed, manual or motorized
	12.0mm **	f1.0	Fixed, manual or motorized
	20.0mm	f1.0	Fixed, manual or motorized
	35.0mm	f1.0	Fixed, manual or motorized
	50.0mm	f1.0	Fixed, manual or motorized
	60.0mm	f1.0	Fixed, manual or motorized
	15-60mm.	f1.0	Motorized or autofocus

* Tanz reserves the right to change any specification or image without previous notice.

** Lens not suitable to 1024x768 resolution.

*** VMS No. channels on demand



Tanz Security, Spain
Gran Vía 19-21 2 planta
48001 Bilbao, Spain

Tanz Security, Taiwan
9F., No. 1095 Yucheng Road
Gushan Dist., Kaohsiung
80458 Taiwan

www.tanzsecurity.com
info@tanzsecurity.com
Tel: +886 905 186 990 (Support)
Skype: tanz-support